

# MILLBOARD ENHANCES THE FLOATING POCKET PARK

*Amazing floating park  
created in West London*

millboard®

Live.Life.Outside.

CASE STUDY

MBCS003FP - **FLOATING POCKET PARK**

# BACKGROUND:

## *Welcome to London's first floating park*

The area around the Grand Union Canal at Paddington Basin has undergone a huge transformation over the past few years, including the 4.45 hectare Merchant Square development. This includes an innovative element in the form of London's first floating park.

Designed by Royal Horticultural Society Young Garden Designer of the Year and Gold Medallist Tony Woods, the park is situated on a hitherto unused and neglected part of the canal system. It features lawns, trees, a wildlife island – and walkways and decking created with Millboard Enhanced Grain boards.



↑ Paddington Basin and The Merchant Square is now almost unrecognisable after a complete transformation.

**Client:** European Land and Property Limited

**Contractor:** Garden Club London

**MBCS003FP - FLOATING POCKET PARK**

**Requirement:** Decking and walkways for innovative floating park

**Products used:** Approx 302m2 Enhanced Grain Golden Oak with matching bullnosed edging and fascia

# THE SOLUTION:

## *Practical as well as visually appealing*

Tony Woods' company, Garden Club London, set about bringing his design to life.

Millboard supplied 302m<sup>2</sup> of Enhanced Grain decking in Golden Oak, together with matching fascia boards and bullnosed edging. The park was opened to the public in June 2017. The choice of Millboard as the material for the walkways and decking is neatly summed up by Garden Club London's Landscape Architect, Ben Dewhirst;



*“We were looking for an authentic and durable decking material to realise our client’s ambitions for creating a new public space floating above water at Merchant Square in Paddington. Real timber would not be able to meet the operational and maintenance requirements of the space and many composite products simply looked cheap or unattractive.”* - Ben Dewhirst, Landscape Architect



⬆ Enhanced Grain Golden Oak

**Client:** European Land and Property Limited

**Contractor:** Garden Club London

**MBCS003FP - FLOATING POCKET PARK**

**Requirement:** Decking and walkways for innovative floating park

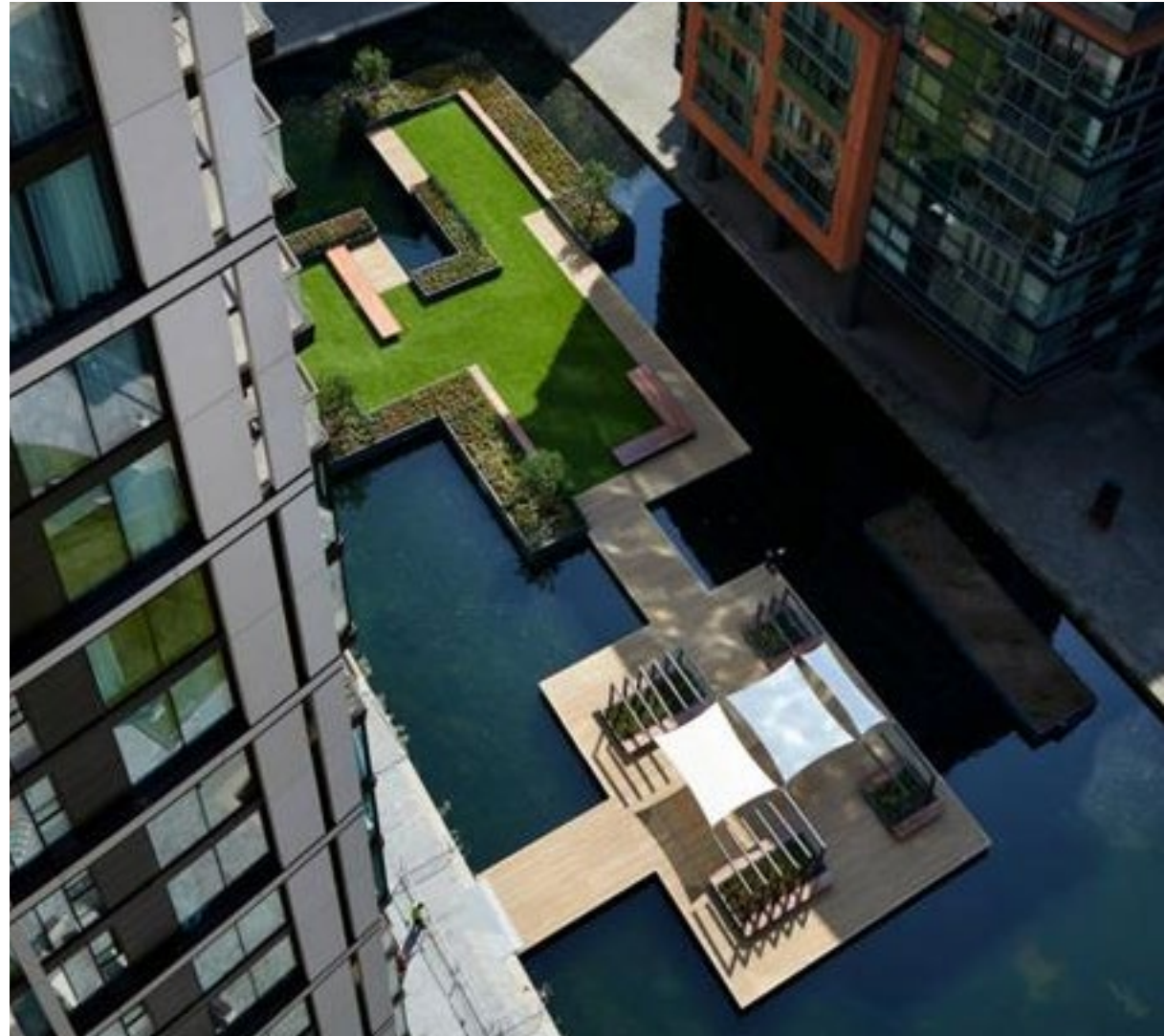
**Products used:** Approx 302m<sup>2</sup> Enhanced Grain Golden Oak with matching bullnosed edging and fascia

# THE OUTCOME:

## *A new destination and an icon for the capital*

Since opening, the Floating Pocket Park has become an iconic London feature, widely covered in the press and recognised for its distinctive design. Visitors can relax on deckchairs, access Wi-Fi, and even hire self-drive electric boats for trips along the canal.

As well as offering a valuable public recreation space, the park is being promoted as a venue for hosting outside meetings. On Thursdays and Fridays throughout the summer of 2017, it even hosted a pop-up Botanicals Bar, where visitors could enjoy gin cocktails!



↑ The new, anti-slip decking requires no special maintenance

**Client:** European Land and Property Limited

**Contractor:** Garden Club London

**MBCS003FP - FLOATING POCKET PARK**

**Requirement:** Decking and walkways for innovative floating park

**Products used:** Approx 302m2 Enhanced Grain Golden Oak with matching bullnosed edging and fascia

*“ Our client loved the natural finish of Millboard and the guarantee that could be provided even in a heavy footfall commercial situation. Our engineers were also impressed at the flexibility offered by the product that would allow for slight movement on the waterline without causing splintering or cracking. We have used Millboard for a number of commercial applications now and would not hesitate to recommend the virtues of this fantastic product! ”*

- Tony Woods, Garden Club London

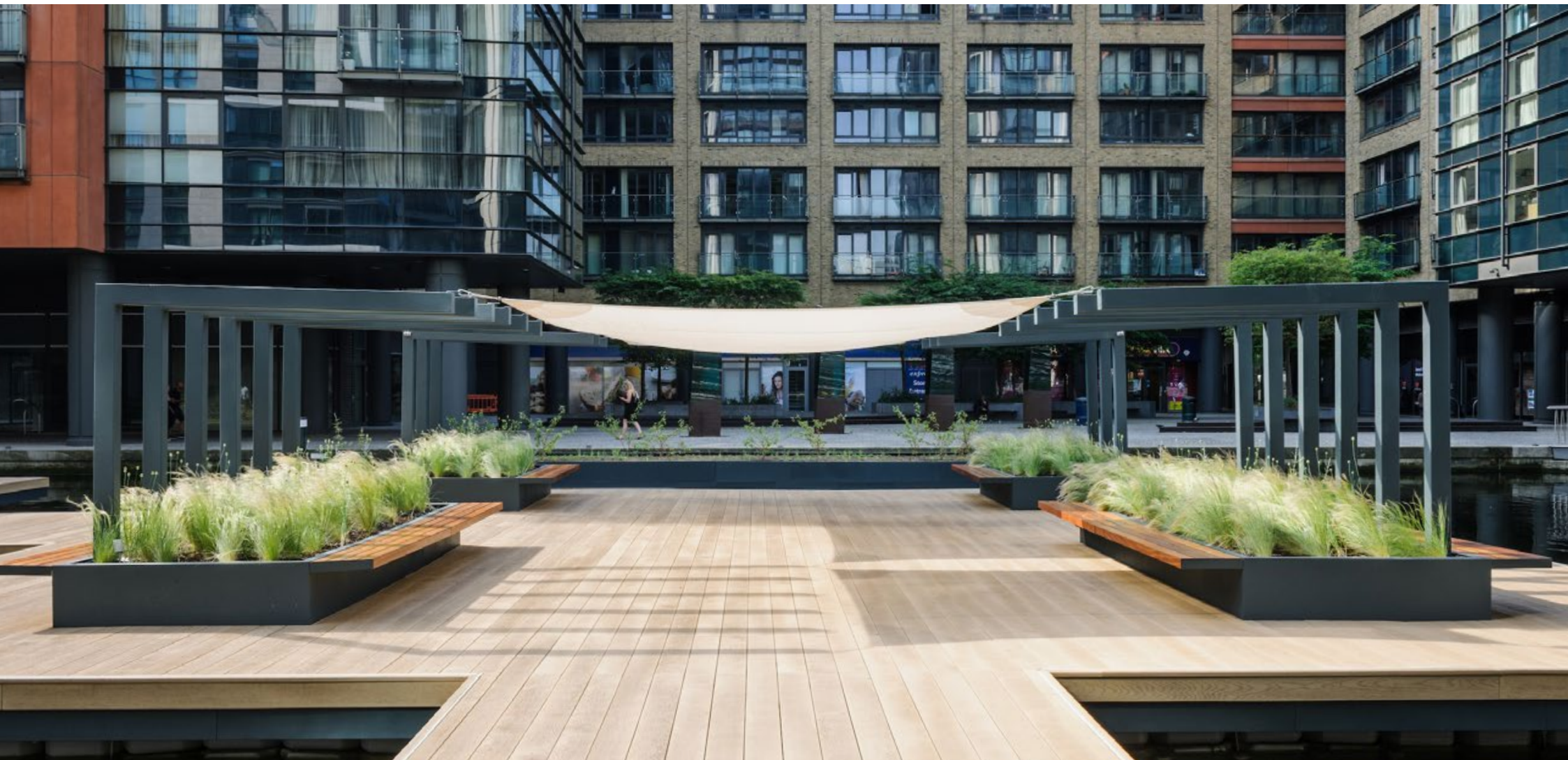
**Client:** European Land and Property Limited

**Contractor:** Garden Club London

**MBCS003FP - FLOATING POCKET PARK**

**Requirement:** Decking and walkways for innovative floating park

**Products used:** Approx 302m2 Enhanced Grain Golden Oak with matching bullnosed edging and fascia



↑ The decking provides striking, safe and durable walkways around the floating park

**Client:** European Land and Property Limited

**Contractor:** Garden Club London

**MBCS003FP - FLOATING POCKET PARK**

**Requirement:** Decking and walkways for innovative floating park

**Products used:** Approx 302m<sup>2</sup> Enhanced Grain Golden Oak with matching bullnosed edging and fascia

# Benefits of Millboard decking for Floating Pocket Park



## Smart looks:

The new decking provides an authentic wood look and is an integral element of the park's design, turning what had been a neglected part of London into a must-see destination.



## Safe to use:

Millboard decking's resistance to algal growth, together with its excellent non-slip properties, means visitors can safely use the Pocket Park even in the wet.



## Easy to maintain:

Whereas real-wood decking would require extensive treatments and maintenance in this aquatic location, Millboard will not rot or split, and a simple wipe over with soapy water is all the cleaning it needs.

**Client:** European Land and Property Limited

**Contractor:** Garden Club London

MBCS003FP - **FLOATING POCKET PARK**

**Requirement:** Decking and walkways for innovative floating park

**Products used:** Approx 302m2 Enhanced Grain Golden Oak with matching bullnosed edging and fascia

millboard®

Live.Life.Outside.

If you have any queries or concerns regarding your Millboard decking, please call our support team. Tel: **024 7643 9943**

For more information and to register your warranty visit: **[millboard.co.uk](http://millboard.co.uk)**

---

The Millboard Company Ltd, Unit A, Castle Court, Bodmin Road, Coventry CV2 5DB

---