



---

**Envello Décor**  
Installation guide

# Décor

millboard

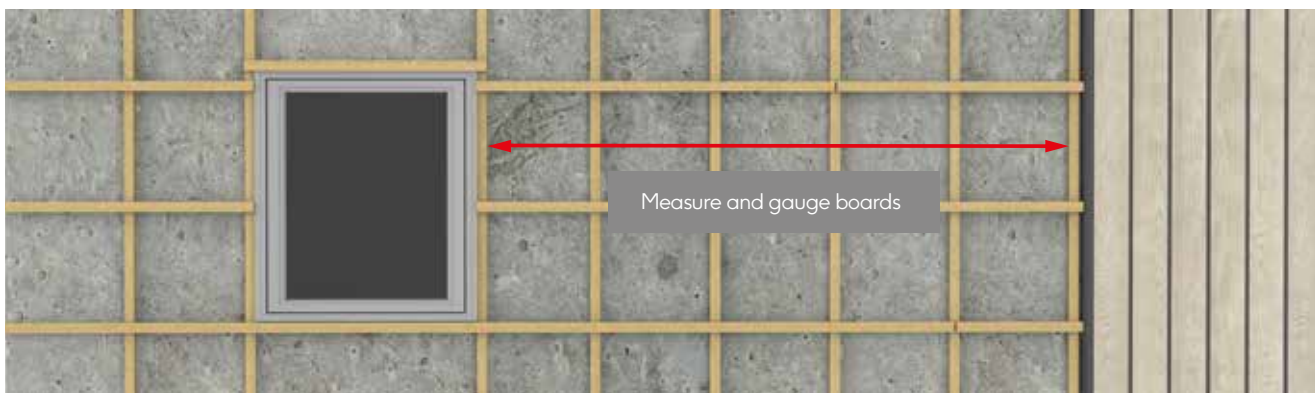
Envello Décor can be used as a single line feature or as an integral part of the whole cladding system. The installation is very simple and gives the added advantage of enhancing the weather resistance of the cladding and further stiffens the system resulting in increased spanning capacity. This reduction provides an added benefit in helping to cut costs on materials and provides considerable labour saving on installation. If the Décor strip is to be used as an integral part of the whole wall, then the usual cladding installation details are to be followed as shown in the **Shadow Line+ install guides**

Cladding utilising Décor profiles as part of the whole scheme can span 900mm in normal residential applications. Where severe weather exposure or exceptional impact loading requirements are anticipated, batten support spacing should be placed at 600mm. This is based on Décor being used every or every other board, if they are being used at a frequency of every 2 boards or more then the battens spacing should be as per the standard Shadow Line+ guides.

Envello Décor can be cut using aluminium cutting tools, this can be a mitre-saw with an aluminium cutting blade. A jigsaw with a metal cutting blade or angle grinder with an aluminium cutting disk can also be used, these would be used when cutting around apertures or along the length of Decor. When cutting the profiles we recommend that FFP3 dust masks, gloves, goggles, and noise-reducing ear pieces are worn.

## Step 1:

When ready to start cladding it's advisable to set/mark out on the battens the board spacing to try to determine the positioning of the Décor profiles around apertures. This can help reduce awkward situations and cuts. It may mean that you start a run with a half/part board, this is due to the ideal placement of the decor around a window.

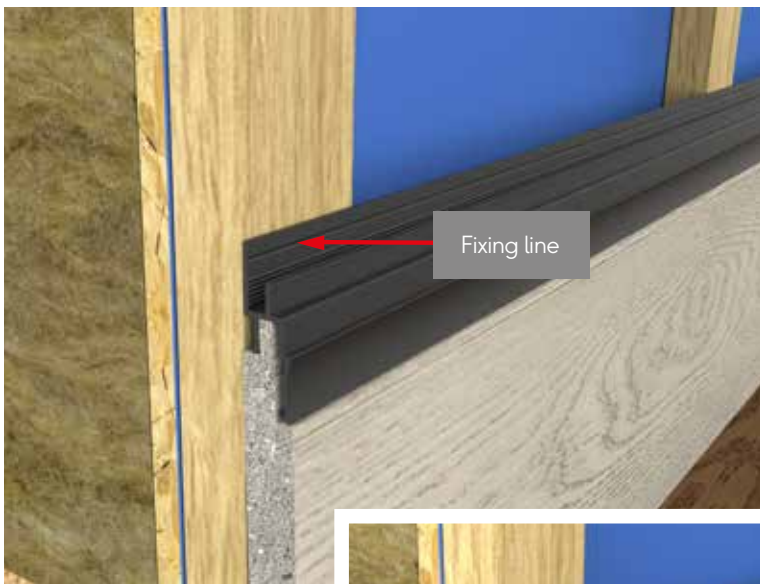


## Step 2:

Once the first board has been located and supported in/ on the 'J' or 'L' starter profiles then the board needs fixing in place to the support battens with the 3.5x30mm cladding board screws. Fix on or preferably below the fixing line making sure the fixing head finishes flush with the surface. These fixings help to stop the boards potentially shaking in strong winds and help restrain board movement.

### Step 3:

Place the Envello Décor over the tongue. You may need to use a block of wood and hammer to lightly set it in tight. You can see from the below image if the fixings have not been set flush it can interfere with the fitting of the Décor strip.



### Step 4:

Drill a 3.5mm hole and countersink through the fixing flange of the Décor profile on the fixing line.

Trend Snappy 1/2 Inch TCT  
Countersink with Adjustable  
3.5mm HSS Pilot Drill,  
Part No. SNAP/CS/12TC



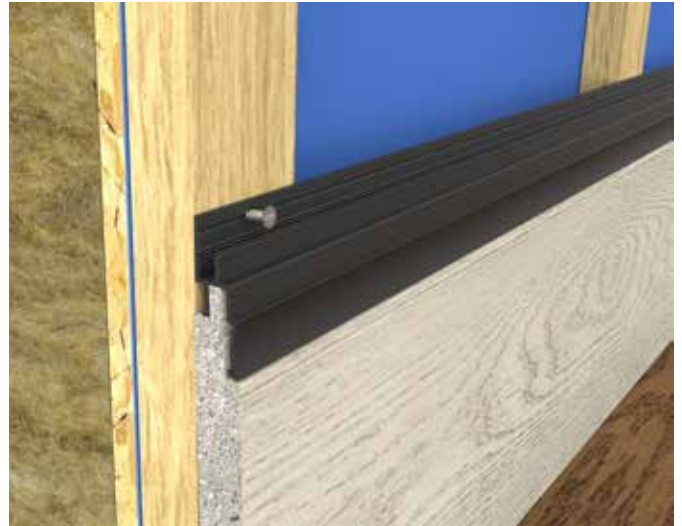
By using a drill and countersink bit, it can save a lot of time when drilling the holes. re set the drill bit to only protrude out from the countersink by 5-6mm.

### Top Tip:

try to stagger the Décor profiles so that the ends don't line up with the cladding board ends.

### Step 5:

Using the 3.5x20mm cladding accessory screws, fix the Décor profile in place to the battens. One fixing per batten or two when there is a butt joint between profiles, ensure the head is sitting flush with the face of the aluminium.



## Trimming around apertures

There are times where a Décor trim is not going to fit exactly beside an aperture and may need trimming/ripping to size to fit in a gap. This will result in the fixing flange being removed, leaving no place to fix the profile in this area.

### Step 1:

Measure and mark cladding board, cut to size and dry fit in place.

### Step 2:

Measure the size of the aperture and the remaining space between the cladding piece and the back of the reveal board and mark these onto the the Décor profile. Remember to measure the gap at the bottom, middle and top to check for any discrepancies.

### Step 3:

Use a jig saw with a metal cutting blade to cut the Décor profile to shape. Make sure the profile is supported while cutting to prevent it bending or creasing.



**Step 4:** dry fit the Décor profile in place taking great care not to bend it. Once happy with the fit remove the profile.

### Step 5:

Sand/abrade the face of the cladding board in the area that will be covered by the Décor profile.(shown green in the image below) It should be sanded enough to remove any residual release agent and to give it a good bonding key. fix the cladding board to the support battens with the 3.5x30mm cladding fixings.

**Note:** extra battens may be needed around an opening.



### Step 6:

Add enough MS Polymer or similar to the back of the Décor profile to fill any voids. Fix the profile in position where possible above and below the aperture then lightly press the glue coated Décor profile into place. Use masking tape to hold in place while the glue sets.

Live. Life. Outside.



The Millboard Company Ltd  
UK Head Office  
Unit A, Castle Court  
Bodmin Road  
Coventry CV2 5DB

T: +44 (0) 24 7643 9943  
E: [enquiries@millboard.co.uk](mailto:enquiries@millboard.co.uk)

[millboard.co.uk](http://millboard.co.uk)

Company registered No. 06061318  
VAT No: 980 616602

© 2023 The Millboard Company Ltd., Millboard®, Lastane®, Durafix®, Lasta-Grip®, DuoSpan®, DuoLift®, Envello® and the phrase "Live. Life. Outside.™" are protected trademarks. Patents and Patents Pending apply to Millboard® products. The company will vigorously defend its patent rights. Due to printing restraints, actual colours may vary from those shown in brochure. This brochure is not to be reproduced or copied without written permission from Millboard directors. Millboard has a policy of continual improvement to specification. Product blend, colours and sizes may change without notice. All sizes and measurements are nominal. Information is correct at time of going to press. Patent numbers include GB 2445714, GB 2449184, USA 8,065,849, CAN 2664329, EU 1951971.