



UK

## Décor

Product specification sheet

### Product Details

#### Application:

Envello Décor is a decorative and structural aluminium trim that is designed to enhance cladding installations, creating a higher premium feel and overall finish.

This product allows the users to either section/zone their cladding area or create a visually unique display further refining their outdoor living space.

#### Available models:

##### Décor Shutter

Décor Shutter is a ridged profile that creates a refined depth of shadowing and finesse between cladding boards, available in two widths and three colours.

● Bronze ● Carbon ● Gold

#### Core Composition:

Aluminium EN AW-6063 T6

#### Surface Composition:

Anodised finish to Architectural (construction) grade AA25 Qualanod standards

##### Décor Curve

Décor Curve is an arced profile that creates a smooth colour enhancement and differing light reflections between boards, available in two widths and three colours.

● Bronze ● Carbon ● Gold

#### Properties:



Premium finish



Multiple widths



Highly UV resistant



Suitable outdoors



Shadow Line+ compatible



15 Year Warranty



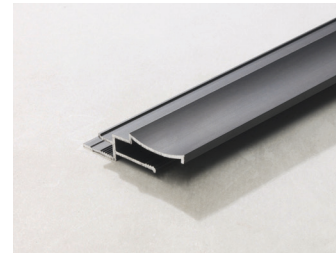
Fire-rated system\*

Envello Décor has been tested to EN 13501-1 as a system incorporating Shadow Line+ cladding, when used in conjunction with each other **Envello Décor improves the overall fire performance of the system classification to a Euroclass C.** This testing is carried out by a UKAS accredited lab and is tested in accordance with how the cladding will be fitted as per the installation guide

#### Install:

Envello Décor should be supported and fixed to battens at max 900mm centres (reduce to 600mm in high-load areas), this is based on being used between every Shadow Line+ board. The profiles can be cut using standard aluminium cutting tools with the correct specifications - mitre-saw or jigsaw. Please refer to our install guide for full details.

## Décor Range



### Décor Shutter

Installed Width: 11mm  
 Visible Width: 16mm  
 Length: 3600mm  
 Depth: 16mm  
 Weight: 1.4kg  
 Construction: Anodised Aluminium

### Décor Shutter

Installed Width: 24mm  
 Visible Width: 32mm  
 Length: 3600mm  
 Depth: 16mm  
 Weight: 1.9kg  
 Construction: Anodised Aluminium

### Décor Curve

Installed Width: 11mm  
 Visible Width: 16mm  
 Length: 3600mm  
 Depth: 16mm  
 Weight: 1.2kg  
 Construction: Anodised Aluminium

### Décor Curve

Installed Width: 24mm  
 Visible Width: 32mm  
 Length: 3600mm  
 Depth: 16mm  
 Weight: 1.6kg  
 Construction: Anodised Aluminium

● Bronze: GLDS16B

● Carbon: GLDS16C

● Gold: GLDS16G

● Bronze: GLDS32B

● Carbon: GLDS32C

● Gold: GLDS32G

● Bronze: GLDC16B

● Carbon: GLDC16C

● Gold: GLDC16G

● Bronze: GLDC32B

● Carbon: GLDC32C

● Gold: GLDC32G

## Shadow Line+ System



### Shadow Line+ cladding boards

Installed Width: 181mm  
 Dimensions: 200 x 18 x 3600mm  
 Weight: 8.3kg  
 Construction: Polymer resin core/fire rated elastomer surface layer

Colours: Antique Oak - MCL360A  
 Smoked Oak - MCL360D  
 Golden Oak - MCL360G  
 Limed Oak - MCL360L  
 Burnt Cedar - MCL360R

### Board/Décor fixings

3.5 x 30mm & 3.5 x 20mm

### Corner profiles

50 x 50 x 3050mm

## Other Accessories and Products

### Aluminium trims and fixings

To view the complete range of Envello Shadow Line+ products available please visit our website: [millboard.co.uk/cladding/edging-trims-fascia](http://millboard.co.uk/cladding/edging-trims-fascia)

[View Accessories](#)